



Phone

Fax

Email

Website

Bohlevale School Road

Bohle

Q. 4818

07-47293555

07-47293500

admin@bohlevaleless.eq.edu.au

www.bohlevaleless.eq.edu.au



Be Responsible, Safe and Successful

13 September 2017

L I N K S

Principal's Paragraph

Dear Parents, Caregivers and Community Members,

Getting ready for Term 4

As we come to the end of the term I ask that over the holiday period parents check that their children have their correct school uniform ready for the start of Term 4. Board shorts, "skins", denim, jeans etc. are not part of the Bohlevale school uniform. As the weather warms up students should not need tracksuits, jumpers etc. at school. Additionally please ensure your children have all the stationery items they require for Term 4.

Have a safe and enjoyable holiday. We look forward to seeing all of our students for the start of Term 4 on Tuesday 3 October.

Prep Precinct Upgrade

Our Prep precinct will be upgraded over the school holidays. This will include the construction of a new classroom and amenities block. This means that the hall car park will be unavailable for parking. Parents and students who use the Bohlevale Before and After School Hours Care facility are asked to use the pedestrian walkway next to the bike racks to access BOSHHC in the morning and afternoon.

Footy Finals Supporter free dress day.

On Friday 15 September we will be having a free dress day. Students are encouraged to come dressed in their favourite NRL or AFL team supporter gear. Wear your club's colours with pride and support them in their quest to win the Grand Final. If you are a Broncos, Cowboys, Storm, Geelong, West Coast or Adelaide supporter make sure you come in your team shirt or jersey. We look forward to seeing you all dressed in supporter gear.

Bohlevale Out of School Hours Care (BOSHHC) – September Vacation Program Vacancies

BOSHHC has a number of spots available for Bohlevale SS students requiring vacation care over the September holidays. Interested parents are invited to contact the co-ordinator, Jess McGuffie for further information. Application forms are available from BOSHHC in the Prep precinct.

Contact details: Email: bohlevaleoshc@gmail.com; Phone: 07 4774 7446

Bus Travel

I met this week with representatives of SunBus regarding the inappropriate and unsafe behaviour of some children who catch buses to and from school each day.

A Code of Conduct for School Students Travelling on Buses is available to provide students and parents/carers with information about how to travel safely on buses. To view the code and more information, visit <http://translink.com.au/travel-with-us/school-travel/getting-to-and-from-school>.

Please be aware that misbehaviour on the bus can result in a student being suspended from bus travel for a period of time. We appreciate the support of parents in ensuring that their children understand what is expected of them when travelling on public transport.

Keep a watch on our school these holidays

Parents and students can help take care of our school by reporting any suspicious after-hours activity to School Watch on 13 17 88. By keeping an eye out we can work together to create a safer school community.

If you see something suspicious, please don't intervene. Call the School Watch number and let the local police or State Government Protective Security Service deal with the matter

Yours sincerely,

Mrs Helen Morris - Principal

BYOD (laptop) for Years 4, 5 & 6 in 2018

Bohlevale State School is inviting parents/caregivers who have expressed an interest in, or who would like more information about, our Bring Your Own laptop class in Years 4, 5 and 6 in 2018, to attend a meeting on either **Tuesday 10 or Wednesday 11 October at 6:00 p.m. in the Resource Centre Meeting Room.**

It is highly recommended that parents/caregivers attend this meeting, as we will be outlining the requirements, responsibilities and commitments associated with the BYOD program.

There will be a second meeting, which will be compulsory to attend, held towards the end of Term 4. At this meeting, parents will commit to purchasing their student a laptop. This is essential, as we need to allocate students to classes prior to the end of the year. We aim to have retailers displaying their products and providing information at this meeting.

Please **RSVP to the school office by Monday 9 October** by ringing 4729 3555 or returning the form on the letter your student has received.

Gold Pins

To be eligible for a gold pin students must consistently show exemplary behaviour and have **received NO major or minor referrals in Terms 1, 2 and 3 of 2017.** **Students must have been enrolled at Bohlevale on or before 10 July to be eligible for a gold pin.**

Students will be presented with their gold pin at an assembly early Term 4. This will allow the eligible students to wear their gold pin all through Term 4.

Eligibility for a gold pin is not linked to the number of gotchas a student has earned.

Green Rewards

As part of our School Wide Positive Behaviour Support program (SWPBS), every 5 weeks a Green Rewards celebration is held. Green Rewards are scheduled for this week.

Students are ineligible to attend if they have received 4 or more minors in the previous 5 week period.

Students are ineligible to attend if they have received 1 major and any other incident (be that a minor or major) in the previous 5 week period.

Roadworks on Garland Road

The Townsville City Council is currently installing a children's crossing at the intersection of Bohlevale School Road and Garland Street. The council will also be overlaying bitumen on Garland Road in Term 4. We ask that motorists and pedestrians be particularly careful in this area and comply with directions issued by traffic controllers at the site.

The Department of Transport and Main Roads will be recruiting two new crossing supervisors for this crossing. Please see the advertisement at the back of Links should you be interested in one of these positions.

Prep to Year 3 Swimming Lessons

All students in Prep to Year 3 have an opportunity to enhance their swimming capabilities and confidence when playing in the water during Term 4 as Bohlevale State School offers their annual swimming lessons during school time. The cost of the 7-lesson program is \$55 and this covers the pool hire, bus hire, pool staffing and equipment. A note with further information on the swim program has been given to each Prep to Year 3 student. **Please note that payment for swimming lessons is due at the cash window by 9:00 a.m. on Friday 15 September.** Parents wishing to negotiate a payment plan are advised to contact the Acting Business Services Manager, Mrs Quinlan before Tuesday 12 September.

Student Leader Positions – 2018

TIMELINE OF PROCESS

All Year 5 students were handed a 2018 Student Leader Nomination Booklet after assembly on Tuesday 29th of August.

Nominations, Speeches, Posters and Election

NOMINATIONS FOR ALL POSITIONS ARE DUE BY FRIDAY 15th of SEPTEMBER 2017.

A short list of candidates (as reviewed by a panel consisting of the Principal, Deputy Principals and Teacher Representatives) will be released on **FRIDAY 13TH OF OCTOBER 2017.**

Students who are short listed for **School Captain** positions **ONLY** will be given the criteria for the poster and speech on **Friday 13th October, 2017.**

School Captain Nominees will bring their posters to school on **Monday, October 30th, 2017.**

Voting

Voting will occur immediately after speeches on Election Day. **Election Day will be held Tuesday 14th of NOVEMBER 2017.**

Announcements

The 2018 School Captains will be announced at the Gold and Silver Awards in Term 4, 2017. The Induction Ceremony will then be held during a scheduled assembly time early 2018.

If you have any further questions, please speak to your child's teacher. We have strongly encouraged students to work closely with their teacher during this process.

Proposed North Shore Youth Activation Hub being delivered by Townsville City Council

We wish to advise that the project survey (<https://www.surveymonkey.com/r/NSYAH>) closing date has been extended by one week. The survey will now close Friday, 15 September 2017 at 5pm.

Change to school Enrolment Management Plan (EMP)

Bohlevale State School has an Enrolment Management Plan (EMP) which outlines how the school manages enrolments. The current [EMP](#) is available on our website. Parents and caregivers can ascertain their eligibility for enrolling children at Bohlevale State School by visiting the [edMap](#) site.

With the opening of a new state school in North Shore our catchment will change in 2018.

All Prep-Year 5 students actively enrolled at Bohlevale SS at the end of 2017 are eligible to continue their enrolment at Bohlevale State School in 2018 regardless of which school catchment they live in. Furthermore, primary school aged siblings of children actively enrolled at Bohlevale SS in 2018 are also eligible to enrol at Bohlevale SS regardless of their residential address. This means, for example, that if you live in the "New school – Burdell" catchment and have a child who will be continuing at Bohlevale in 2018 and you also have a child who will be starting Prep in 2018 he/she is eligible to enrol at Bohlevale State School in 2018.

Parents living in the new school catchment may also decide to transfer their primary school aged children to the new school. We ask that if this is your intention that you let the school office know at your earliest convenience. Please note that if a BSS student who does not live in the Bohlevale SS catchment transfers to the new school (or any other school) in 2018 he/she will not be able to transfer back to Bohlevale SS unless he/she lives in the Bohlevale SS catchment.

Please feel free to contact the principal on the.principal@bohlevaless.eq.edu.au should you require any information about enrolment catchments or processes.

LOST

A Pandora bracelet with four charms has been lost around the school premises. If found please return it to the Bohlevale school office.

Safety, It's Up to Me

Today La Luna Youth Arts presented a **FREE** performance for our school, funded by the Department of Transport and Main Roads through their *Join the Drive to Save Lives* initiative. **Safety, It's Up to Me** is a theatre-in-education production that looks at travelling to and from school safely and, in particular, what children can do to ensure they stay safe when walking, riding and driving as a passenger to school. All students from Prep to Year 6 attended the 45 minute presentation.

Prep Enrolments 2018

We are now accepting 2018 enrolments into Prep for children born between 1st July 2012 and 30th June 2013. Appointments can be made by phoning the school on 47 293 555. Please note that your student's birth certificate must be sighted by school staff as part of the enrolment process and proof of residency in the school's enrolment catchment area must also be provided.

Parents or legal guardians who wish to enrol their child at the school will need to demonstrate that the student's principal place of residence is within the catchment area.

Current proof of residency at the address indicated can be provided by way of one of each of the following:

- One primary source – a current lease agreement, or rates notice, or unconditional sale agreement, **and**
- One secondary source – a utility bill (e.g. electricity, gas) showing this same address and parent/legal guardian's name

Catchment areas for all Queensland state schools are available online from the EdMap website: <http://www.qgso.qld.gov.au/maps/edmap/>

Early Entry into Prep

It is possible for children born 1st-31st July, 2013 to be considered for early entry into Prep in 2018 if the child is considered ready for education considering the full range of their attributes.

Early Entry to Prep is an **exception** and should only be considered where it is in the best educational interests of a child.

Decisions relating to applications for early entry into Prep are made on a case-by-case basis. Please contact the school for an appointment to gain further information about the department's current process.

2018 Prep Enrolment and Parent Information Sessions are as follows:

Wednesday, 11 October 2017 (8:45am)

Thursday, 26 October 2017 (2:45pm)

Tuesday, 14 November, 2017 (2:45pm)

BSS 2018 'Prep Experience' Sessions

19 & 20 October, 2017 (Morning/Afternoon sessions available)

Parents of prospective 2018 Prep students are asked to call the school office on 47 293 555 to register for the 'Prep Enrolment and Parent Information Sessions' and/or 'Prep Experience Sessions.'

DATES TO REMEMBER

September	
15 September	Green Rewards
15 September	Camp Quality Puppet show – gold coin donations encouraged
15 September	Annandale Cup (Under 10s Rugby League)
15 September	Uniform Free Day – Wear your football supporters (sunsafe) clothes
15 September	Last day for payment for Prep –Yr 3 Swimming
15 September	Last day of school for Term 3
October	
3 October	First Day of school for Term 4
10/11 October	BYOD Meeting
16 October	Student Free Day

STUDENT OF THE WEEK

EPA	Jake		For working hard to improve his handwriting
EPB	Noah		For trying hard with writing
EPC	Arabella		For reciting the Gruffalo with GREAT actions
EPD	Hannah		For an engaging Gruffalo presentation
EPE	Sandra		For making an effort to be ready to learn
EPF	Katie		For writing a fantastic 4 line poem
EPH	Ezekiel		For being focussed during class time
EPI	Albert		For great improvement in reading
EPJ	Jakob		For excellent improvement in reading
EPK	Milee		For doing a fantastic English presentation
EPL	Amber		For always working hard
EPM	Scarlett		For being a helpful member of EPM
EPN	Jada		For being Responsible, Safe and Successful
EPO	Dominic		For being Responsible, Safe and Successful
EPP	Benjamin		For great reading Level 19
EPQ	Chase		For reaching his reading target
EPR	Mikayla		For improved effort in independent writing
EPS	Maddison		For consistent effort in all subject areas
EPT	Zairah		For an amazing positive mindset
EPU	Ethan		For an excellent effort in all learning areas
EPW	Klanci		For playing well with a partner
MPA	Tahlia		For putting in a great effort into your English
MPB	Neico		For always displaying an excellent attitude towards learning
MPC	Evelyn		For following rules at her new school
MPD	MPD		For working hard during assessment time
MPE	Alicia		For consistently completing homework to a high standard
MPF	Montana		For staying on task at all times
MPG	Lea		For working hard in absolutely everything
MPH	Saimon		For a huge effort in his English writing task
MPI	Tysen		For working hard to finish English
MPJ	Brody		For a massive improvement in class
MPK	Isaiah		For an excellent presentation for his narrative transformation
MPL	Sydney		For developing on outstanding narrative transformation
MPM	Monique		For excelling at academics and sporting pursuits
MPN	Leilani		For great work on her assessment tasks
MPO	Riley		For an excellent attitude towards learning
MPP	Owen		For having a persistent attitude towards his learning
LOTE	MPO		For outstanding improvement in behaviour
Read Around Australia	Alicia Paige Summer	MPE MPC MPM	
Read Around Australia	Ayush Isabelle	EPQ EPJ	
Scientist of the Week (Prep-Yr2)	Brianna	EPI	Question: What part of the body protects our brain? Answer: Skull
Scientist of the Week (Yr 5/6)	Braith		Question: Butterflies taste their food by standing on it. True/False? Answer: True

HONOUR ROLL

Prep: P-2: Be Safe - Hands feet and objects to yourself, Use your words not your hands.

Year 1-6: Follow instructions the first time, every time.

EPA	Tyeson		EPU	Indi	
EPB	Ally		EPW	Loretta	
EPC	Mason		MPA	Michala	
EPD	Indiana		MPB	Kaley	
EPE	Ella		MPC	Alexis	
EPF	Sienna		MPD	Billy	
EPH	Harrison		MPE	Brenden	
EPI	Ciara		MPF	Jharquin	
EPJ	Leeah		MPG	Eliza	
EPK	Caylee		MPH	Kayla	
EPL	Abigail		MPI	Callum	
EPM	Tyler		MPJ	Kye	
EPN	Will		MPK	Jack	
EPO	Deacon		MPL	Ashton	
EPP	Servannarh-Jaine		MPM	Taliah	
EPQ	Mau		MPN	Logan	
EPR	Talaiyah		MPO	Cohen	
EPS	Lakeeta		MPP	Adrian	
EPT	Monique				

The 'Super attending' classes for Week 9 are: (based on full day absences)

EPQ – 95.45%

EPV – 94.20%

MPP – 93.33%

Congratulations to all of these classes.



CASUAL POSITION AVAILABLE SCHOOL CROSSING SUPERVISOR

Bohlevale State School

We are seeking interested persons for a casual position, approximately 1hr 30mins per day, on a rotating roster, school days only.

Approved applicants will be required to undergo a medical assessment and pass a blue card application.

Pay rate starts at \$28.90 per hour.
Call 47587505 for an application package.

Wellbeing and Student Engagement Update

SWPBS

This week students who have demonstrated positive behaviour will be celebrating at Green Rewards. Teachers have organised wonderful activities for students to enjoy. Please congratulate your child if they have been successful in this area.

Toothbrushes, Toothpaste and Soap Donations

It is the last few days for donations of toothbrushes, paste and soap.

Donations can be taken to classes or dropped off at the office. Our school community is known for its generosity. YWAM will collect items bound for New Guinea this Friday.

Camp Quality Puppet Performance Week 10

This Friday, Camp Quality will present their cancer awareness puppet show to all students. There will be an opportunity for a gold coin donation. This will be collected by the student council.

Performance times: PREP –Year 1 9:00-9:30am, Year 2-3 9:45-10:30am, Year 4-6 11:15- 12:15pm

If you have any questions about the show please feel free to contact James from Camp Quality on (07) 3084 4103 or Mrs Giesen at Bohlevale School.



DASH

DASH is on this week!

For Term 4 the same students are invited as it is a commitment for a semester. DASH will recommence in **Week 2, 11th October** and be on every Wednesday until Week 7, 15th November. This will be the last DASH session for 2017 and on that day there will be a community BBQ and all DASH students and families will be invited to attend.

Have a safe and relaxing spring holiday. Enjoy time as a family!

Ann-Marie Giesen

HOD Wellbeing and Student Engagement

agies5@eq.edu.au

Inclusive Activity Afternoon

Disability Action Week is held annually in September with the aim of empowering people with disability, raising awareness of disability issues, and improving access and inclusion throughout the wider community.

With 1 in 5 Queenslanders having a disability, and disability touching the lives of most Queenslanders in some way, the week is an important celebration.

Inclusive Activity Afternoon:

Details are:

When: Thursday 14th September 2017 from 2.45 – 3.45

Where: Outside Bohlevale Resource Centre

Cost: Free



Come and join us for an afternoon of fun inclusive activities to help celebrate disability week. Parents are invited to come along and participate in activities and to share afternoon tea with their child.

Activities include: Face painting, Friendship beading, Bubble play, Touch football

Chappy Chat

IT'S WEEK 10!!

Like many mothers, I am breathing a BIG sigh of relief for the reprieve from uniforms and school lunches over the September break! However, if (like me) you're looking for something fun and budget-friendly things to do with the kids, I've listed a few suggestions below to keep them entertained so you can relax! I wish everyone in the Bohlevale School community a safe and fun-filled holiday and I hope to see you next term as we count down to Christmas!

FAIRFIELD CENTRAL

Kids Workshops

- FREE Kids Workshops- Thursday 22 to Wednesday 28 September. 9.00am and 12.00pm daily
- Different Craft activity each day – Finger Puppets, Bird Feeders, Dream Catchers, Loom Bands, Grassy Heads, Elf and Fairy Houses and Drink Bottle Decorating

CASTLETOWN SHOPPING WORLD

Marsupial Madness

- 11.00am to 1.00pm daily
- Running from 19-24 September in the Target Forecourt

Tales from the Toybox

- 11.00am to 1.00pm daily
- Running from 26 September to 1 October in the Target Forecourt

Townsville Ten Pin Bowling @ Castletown

- 11.00am to 1.00pm daily
- Running from 22- 24 September and 28- 30 September
- No bookings required

MUSEUM OF TROPICAL NORTH QUEENSLAND

Brick Kids Holiday Programs running weekly through the School Holidays.

- **Feature Activities – Monday- Friday 19 – 23 and 26-30 September**
- **Brick Kids 2.0 Led LEGO Play Workshops** – at 10.30am, 12.30pm and 2.30pm daily (Cost involved) bookings required.
- **Lego Jewellery Craft classes** –Tuesdays, 20 and 27 September at 11am – 12pm (Cost involved) bookings required.
- Bookings (when required) can be made by calling 07 4726 0600 during business hours. For Full program details go to www.mtq.qm.qld.gov.au

Bohlevale State School acknowledges that our school is on the lands of the traditional custodians, the Bindle and Wulgurukaba people. We pay our respects to Elders past, present and future.

DSTA News

School holidays are now in sight, yay! Make sure you get onto the Geckos Facebook page for all the fun school holiday events planned.

Morning Tea Schedule Term 4

Monday 9 th October	SAKG BLOCK	Guest Speaker Nikki Rothwell from Geckos
Monday 23 rd October	SAKG BLOCK	Brain storming session; Doctors, Dentist, Hairdressers, Sporting groups! Let's make a Bohlevale directory for newcomers
Monday 6 th November	SAKG BLOCK	Come along and share your quickest yummiest dinner recipes!
Monday 20 th November	SAKG BLOCK	TBA
Monday 4 th December	SAKG BLOCK	End of year, congratulations you made it! Now let's eat chocolate cake

You've been meaning to come along to a morning tea but haven't quite made it? Maybe Term 4 is your chance, it is an informal coffee and chat. I get the opportunity to meet parents and for you to get to know myself and other defence families within the school.

Stay safe this school holiday, have fun and make some awesome treasured memories!

Some useful numbers to remember:

Need Support, advice or connection with you or local community? Call the all-hours Defence Family Helpline 1800 624 608 or

www.defence.gov.au/dco

Facebook search 'Defence Community Organisation'

Support and Information for

Defence and Families, National

Welfare Coordination Centre

1800 801 026 – 24 HOUR SERVICE

Phone: +61 2 6127 1812 –

www.defence.gov.au/nwcc/

PMKeyS Number required

VVCS – 1800 011 046

See you all in Term 4

Cherie Malone



Hi parents and carers!

We're writing from Camp Quality to let you know that our Primary School Education program has been invited to perform at your child's school.

Camp Quality believes every Australian child impacted by cancer should have the opportunity to thrive. We provide innovative programs and services to develop life skills and strengthen the wellbeing of children aged 0-13 growing up with cancer, and their families. At no cost to schools, parents or students, our vivacious and loveable puppets, Kylie, Dean and Melissa visit schools to help support children impacted by cancer. The puppets dispel myths and misconceptions that are commonly associated with the illness. Since 1988 our program has visited schools across Australia, sharing an interactive, engaging narrative that explains:

- The ins and outs of cancer
- Why a peer who has undergone treatment may look a little different (due to the side effects of chemotherapy)
- Why it's important to be supportive of their classmate who is either living with cancer or has a diagnosed parent or sibling
- That cancer isn't contagious, so it's ok to play
- The importance of positivity and recognising our own strengths

"It took away the stigma and fear from cancer. As we have a student at our school being treated for leukaemia, it helped the children understand what she is going through and why she has lost her hair. Having an understanding of the disease has certainly increased the empathy in the other children too." - Primary school principal

"The manner in which the show addresses cancer is age appropriate while clearly articulating the facts. It has helped me to be able to talk about cancer in a positive and reassuring manner"- Primary school teacher

Following the performance, students are encouraged to ask questions and share their concerns. While we are able to answer most of their questions and concerns, we provide teachers with resources to supplement the performance and aid classroom discussion. If any concerns arise after the performance, please feel free to contact us.

If you would like more information about the program or would like to see a clip of our puppets in action, please visit www.campquality.org.au/for-teachers. You're also welcome to contact our puppet team by emailing us at Kylie@campquality.org.au or by calling 1300 662 267.

As a not-for-profit charity, all services come at no financial cost to the families we support. Thus, we rely heavily on the generosity of everyday Australians to keep our programs running. To donate, please visit our website www.campquality.org.au

Need help talking about cancer at home?

The Kids' Guide to Cancer app has been developed to support children age 8-13 who have a parent, sibling, friend or loved one with cancer. Providing them with age appropriate information, the app answers some of the big questions kids have about cancer and gives them ideas on how they might be able to support their loved one. www.campquality.org.au/kidsguidetocancer





Art Escape

School Holiday Program

Tiny Terrariums!

Pinnacles Gallery

When: Tuesday 26 to Friday 29
September 2017

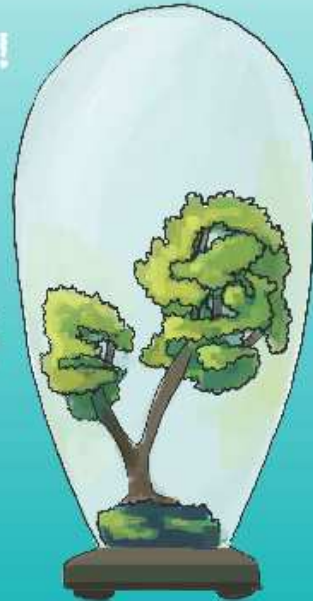
Time: 10am to 12pm

Age: All ages and families welcome

Cost: FREE

Visit Pinnacles Gallery for a week of free, drop-in art workshops! Design a unique, tiny terrarium with a variety of materials that will inspire and delight.

All materials are provided on a first come, first serve basis and children must be accompanied by a parent or guardian at all times. For groups, bookings are essential.



Pinnacles Gallery
Bunney Arts Centre
27 Whiggie Street
Townsville Central QLD 4810
Open - New Years - 9pm
Closed Public Holidays

081 472 8871
pinnacles@townsville.qld.gov.au
children@townsville.qld.gov.au
PinnaclesTCC



TOWNSVILLE CITY COUNCIL



FREE FAMILY FUN DAY

At Perc Tucker Regional Gallery

**THIRD SUNDAY
OF EVERY MONTH**

From 10am - 12pm

- Free art making activities for families
- All materials are provided
- Drop in for 5 minutes or 2 hours
- Third Sunday of every month
- Children must be accompanied by an adult at all times

Image: Screen // Art Escape School Holiday workshop, July 2014

Perc Tucker Regional Gallery
Cnr. Denham & Flinders St. Townsville
Monday - Friday: 10am - 5pm
Saturday - Sunday: 10am - 2pm
Closed Public Holidays

f /PercTuckerTCC
t (07) 4727 9011
e ptrg@townsville.qld.gov.au
www.townsville.qld.gov.au



TOWNSVILLE CITY COUNCIL

Bringing Up Great Kids

Bringing Up Great Kids is a six session Reflective Parenting Program suitable for parents with children aged 0 – 12. The program focuses on:

- Messages received from our childhood and the impact it has on our parenting styles
- Early brain development in children
- Positive communication patterns that encourages calm and respectful family interactions
- Stress management for parents and children

DAY GROUP

Tuesday mornings: 10am -12pm

Dates: 10th October

17th October

24th October

31st October

7th November

14th November

The BRINGING UP GREAT KIDS Program is FREE of charge.

Please note that child minding is
unavailable.

For further information or to register
please phone 1300 364 277

